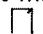



SECTION 6

SECTION 4

NOTE:
THE LOT NUMBER IS PLACED IN THE UPPER RIGHT HAND CORNER OF LOTS AS YOU FACE THE LOT AND IS INDICATED THUS: 

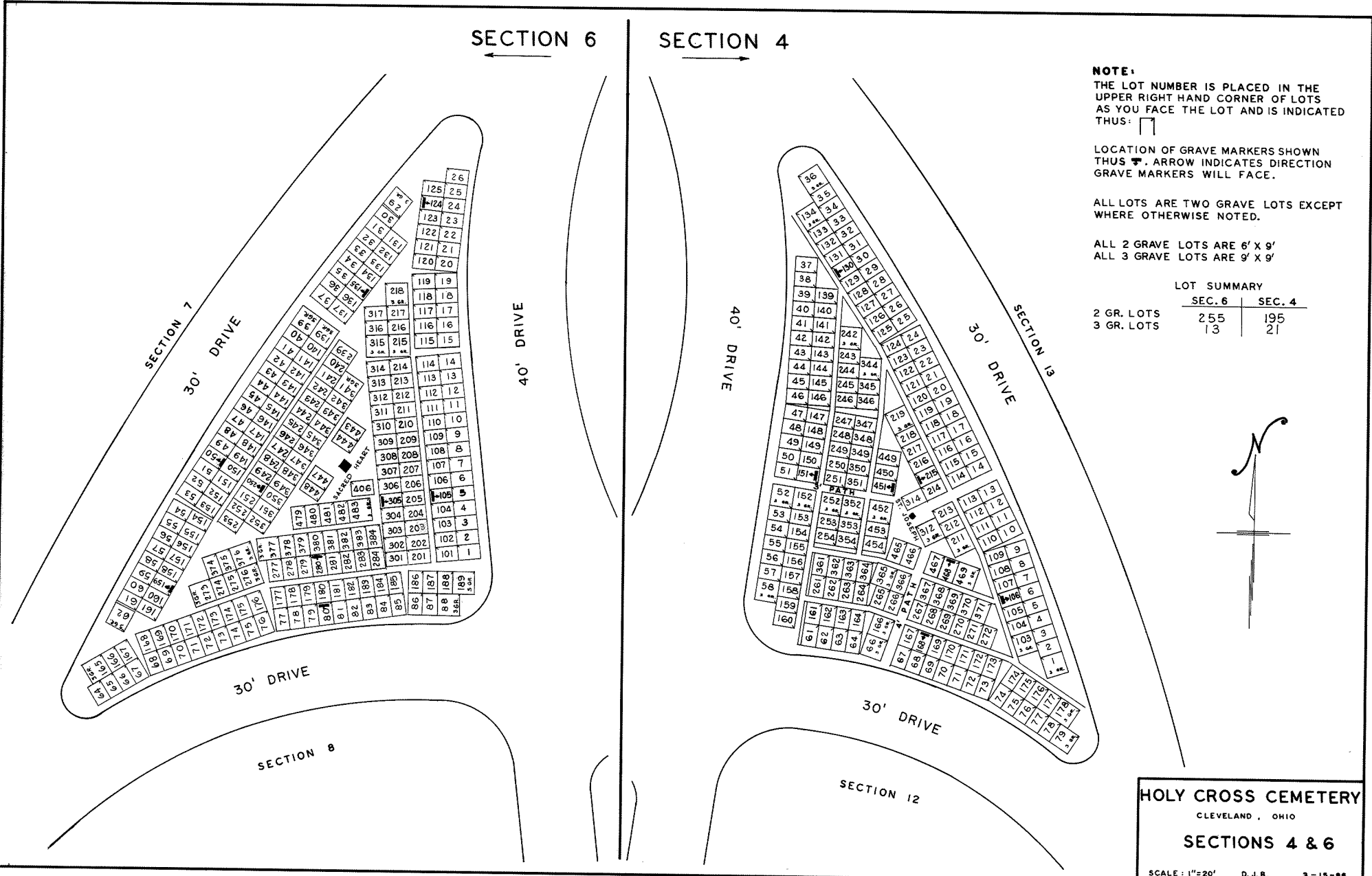
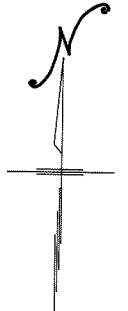
LOCATION OF GRAVE MARKERS SHOWN THUS . ARROW INDICATES DIRECTION GRAVE MARKERS WILL FACE.

ALL LOTS ARE TWO GRAVE LOTS EXCEPT WHERE OTHERWISE NOTED.

ALL 2 GRAVE LOTS ARE 6' X 9'
ALL 3 GRAVE LOTS ARE 9' X 9'

LOT SUMMARY

	SEC. 6	SEC. 4
2 GR. LOTS	255	195
3 GR. LOTS	13	21



HOLY CROSS CEMETERY
CLEVELAND, OHIO
SECTIONS 4 & 6